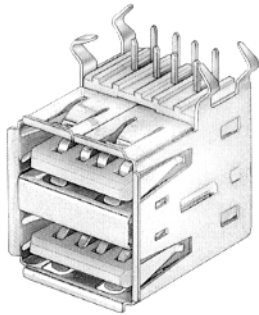
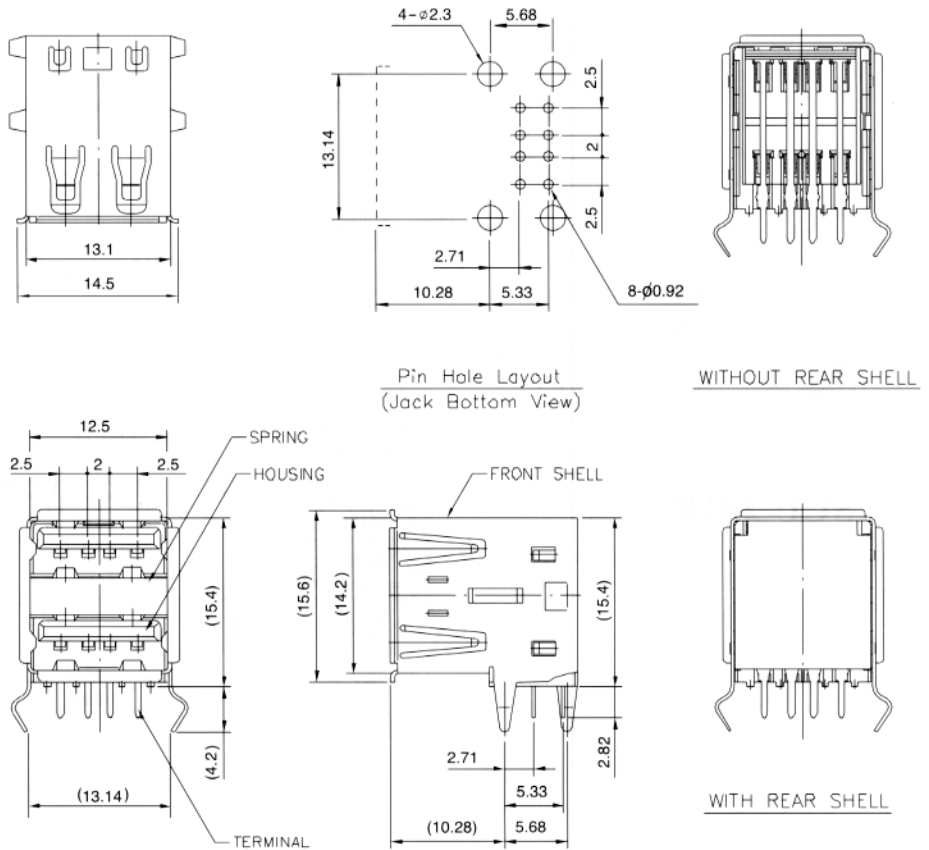


# USB A-TYPE SOCKET CONNECTOR

## SCU102R SERIES



**SCU 102R**



### Feature

SCU102 series is USB, A-type, double deck, socket connector. It provide with rear shell type, without rear shell type. Also, with front shell with spring or without spring type.

### Construction

1. Housing : PBT or high temperature polyester & glass fiber, UL94- V0
2. Contact : Phosphor bronze
3. Shell : Copper alloy

### Specification

1. Voltage rating : 1AMP, 30VAC
2. Insulation resistance : 1000M $\Omega$  min
3. Contact resistance : 30M $\Omega$  max
4. Dielectric withstanding voltage : AC 750V
5. Temperature rating : -55 $^{\circ}$ C to + 105 $^{\circ}$ C

### Ordering Information

**SCU102**

- ① : Series No.  
SCU102 = USB socket connector  
A type, double deck
- ② : PCB mounting option  
R : PCB RT/Angle, through hole type
- ③ : Contact plating option ("G" is standard)  
G : Selective gold flash over 30"u  
Pd-Ni over 50"u nickel  
J : 30u" selective gold over 50u" nickel
- ④ : Front shell option  
0 : Without spring type  
1 : With spring type
- ⑤ : Rear shell option  
0 : Without rear shell  
1 : With rear shell
- ⑥ : Insulator color option  
B : Black I : Ivory W : Frost White
- ⑦ : Special option  
0000 : No special option